



**MITSUBISHI
MOTORS**



MIRAGE



It's your time.

YOU'RE ALWAYS BUSY,

RUSHING TO THE NEXT THING.

TODAY IS YOUR DAY, HIT PAUSE AND

TAKE A BREATH, LIVE IN THE MOMENT.

MAKE TIME FOR YOUR BEST FRIEND,

STOP AND SMELL THE FLOWERS.

THERE ARE BIG REWARDS IN THE

SMALL THINGS AND WITH

NEW *Mirage* YOU WILL FIND THEM.

MIRAGE

*Find your
happy place.*



M I R A G E



» MATCHY – MATCHY.

With on trend colours and all new styling, the quest to create a car that matches your style means no detail has been overlooked.

You and new **Mirage** were made for each other.

» SAFETY AS WELL AS BEAUTY.

Your stylish new Mirage is built to keep you even safer.

A rigid shell, airbags and the addition of even more intelligent safety systems make driving your new **Mirage** the safest it's been.

» GOOD THINGS COME IN SMALL PACKAGES.

Step towards your new **Mirage** and you'll see a beautifully designed compact car. Step inside and you'll find a spacious cabin where everything is designed with you in mind. From the new 7 inch display touch screen to the new soft touch armrests, it's all created to let you enjoy the drive as much as the arrival.



***A fresh face
in the city.***



Whether you're going out on the town or pulling into the front row of a fancy hotel, you'll always be an 'A-lister' with new **Mirage**. As people turn to look, the first thing they'll notice is **Mirage's** fresh new face. Sparkling accents from the chrome detailed grille lead

the eye to the dynamic angular headlights set above the newly designed daytime running lights. New machine finished 15 inch alloy wheels give **Mirage** a confident stance, while the rear hatch and bumper have also had a makeover.

Peering inside, they'll find new levels of comfort with premium geometric patterned fabric seats and soft touch armrests.

Inside and out, the all new **Mirage** is the fresh face in the city.

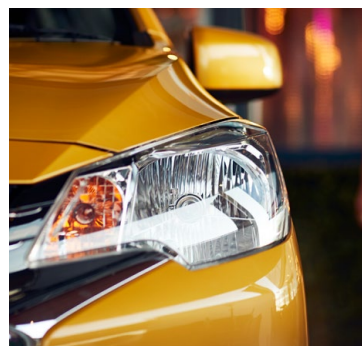
Your new best friend.

CAPABLE AND GOOD FUN. **MIRAGE** IS DESIGNED TO HELP YOU DO MORE AND ENJOY MORE.



» PLENTY OF BOOT SPACE

Lift the hatch for plenty of cargo space - perfect for popping into town.



The new **Mirage** is perfect for fitting into that small parking spot next to your favourite stores or going out for the night with the girls. Capable of carrying four passengers in comfort with all kinds of helpful storage space and cup holders at hand.

The seats will also split 60:40 to help you juggle passengers and cargo.

There's 235 litres of boot space for day to day shopping, or even more room for those larger or odd shaped things, when you fold the rear seats flat for 599 litres of luggage room.

Getting into **Mirage** when your arms are full of shopping is easy too, thanks to keyless entry.

Maneuvering in the city is just as easy with an effortless turning circle of just 9.2 metres.

From the drivers seat you'll find the new dash layout enhances your driving experience. The position adjustable steering wheel houses the audio, cruise control and handsfree phone function, while the large dash mounted 7 inch Smartphone Link Display audio screen connects you to Apple CarPlay and Android Auto.

Keeping you Safe

IT'S EASY TO SEE THAT MIRAGE
HAS NEW STYLING, BUT WHAT YOU
CAN'T SEE IS THAT IT ALSO HAS A
RANGE OF NEW SAFETY FEATURES.





A better safer drive

MIRAGE DELIVERS A DRIVING EXPERIENCE YOU WOULDN'T EXPECT FROM A COMPACT CAR. IN THE CITY OR THE COUNTRY, IT'S SPIRITED, COMFORTABLE AND SURE-FOOTED.

Around town, **Mirage** gets up to speed surprisingly quickly. On the open road, it glides along without working hard.

The smooth acceleration comes from the CVT transmission, which constantly keeps you in the right gear to deliver the power you need and good efficiency. For added braking and control downhill, put the gear lever into the B setting. Speaking of hills, you'll never roll back at the lights again

thanks to HSA (Hill Start Assist), which holds the brake for 2 seconds while you move your foot to the accelerator.

The 1.2 Litre 3-cylinder engine provides ample power and returns economy of just 5.0 Litres per 100 km.

With nimble handling and the addition of new safety features, your new **Mirage** drives safely indeed.

One of the benefits of being compact is that you can be quicker to respond.

Mirage has excellent forward visibility and pin sharp steering for when you really need it. This is further enhanced by ASC (Active Stability Control) and ATC (Active Traction Control), essential features for keeping the safest course.

It's often said to keep track of kids you need eyes in the back of your head, well now new **Mirage** comes equipped with a Reversing Camera that shows exactly what's behind you on the 7 inch display screen.

Stop it. ABS brakes come standard on **Mirage** along with other proven safer braking enhancements. In addition, two new safety features in **Mirage** are FCM (Forward Collision Mitigation) and LDW (Lane Departure Warning).

Both of these new safety features compliment the others to make your drive the safest it's been.

The body is a rigid shell that absorbs energy on impact and contributes to the strength and agile handling of the car.

In the cabin there are driver and passenger airbags in the front as well as side and curtain airbags on both sides. ISOFIX points are located in the rear seats to safely anchor approved child-seats to keep the kids safe.

All this adds up to the safest **Mirage** we've ever made.



» SMART SAFETY
Inside, you're kept safe by 6 airbags and a rigid body design that absorbs energy.



- » (RIGHT) CRUISE CONTROL
Operate cruise control without taking your hands off the steering wheel.
- » (BELOW) EASY TO GET INTO
Keyless entry, perfect when your arms are full.



Big list of features

MIRAGE HAS EVERYTHING YOU NEED.



- » (ABOVE) SPLIT-FOLDING REAR SEATS
Passengers and large items are accommodated with ease.



- » (ABOVE RIGHT) THE PERFECT WHEELS
The machine-finish 15 inch alloy wheels echo the new smart design.



- » (MIDDLE RIGHT) NICE AND SPACIOUS
Whether you're in the back, in the front or behind the wheel, Mirage has the head and legroom you need.



- » (RIGHT) SMARTER, SAFER
Tinted windows keep your cargo out of sight and enhance Mirage's looks.



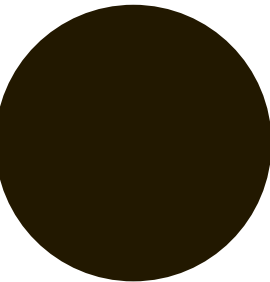
» Mirage XLS in Cool Silver.

Mirage XLS

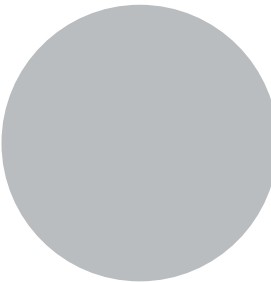
A SURPRISING AMOUNT OF FEATURES, SPACE AND POWER ARE ALL STANDARD ON MIRAGE XLS.

MIRAGE XLS AT A GLANCE:

- + 15 Inch Alloy Wheels
- + Hill Start Assist
- + 5.0L / 100 km Fuel Economy
- + Smartphone Link Display Audio System
- + Apple CarPlay and Android Auto Compatible
- + Active Stability Control
- + Forward Collision Mitigation
- + Lane Departure Warning
- + Rear View Camera
- + ABS Brakes with Electronic Brakeforce Distribution
- + Driver, Passenger, Side & Curtain Airbags
- + 5 Star Safety Rating
- + INVECS III Transmission
- + Rear Spoiler
- + Privacy Glass
- + 9.2 m Turning Circle



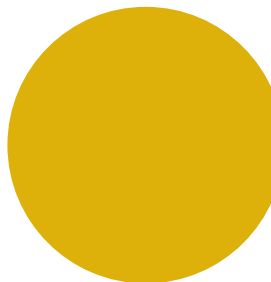
» PANTHER BLACK



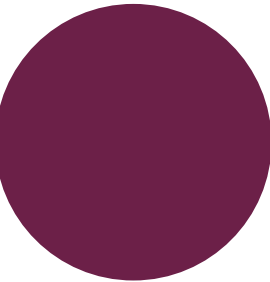
» COOL SILVER



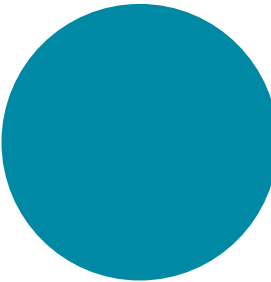
» PURE WHITE



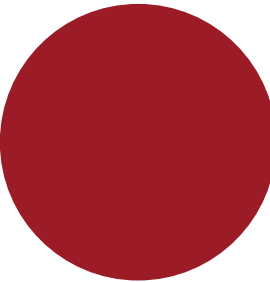
» SAND YELLOW



» GARNET



» NEPTUNE BLUE



» RED VELVET

Detailing

Add extra features to personalise your Mirage



» HEADLAMP GARNISH



» REAR HEADLAMP GARNISH



» REAR BUMPER GUARDS



» WEATHER SHIELDS



» UNDER GRILLE GARNISH



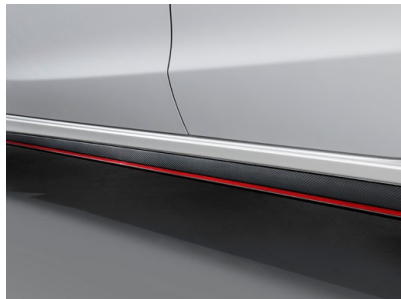
» SCUFF PLATE



» LUGGAGE TRAY



» ARMREST CONSOLE



» SIDE AIR DAM



» REAR AIR DAM

Specifications

	MIRAGE XLS
GENERAL	
BODY TYPE	5 Door Hatch
SEATING CAPACITY	5 Persons
ENGINE	
ENGINE	1.2L MIVEC Petrol
DISPLACEMENT	1,193 CC
MAX POWER	58 kW @ 6000 RPM
MAX TORQUE	102 Nm @ 4000 RPM
FUEL CONSUMPTION	5.0 L / 100 KM
CO ₂	115 G / KM
FUEL TANK	35 L
TRANSMISSION	
TYPE	CVT
SAFETY	
AIRBAGS	Driver, Passenger, Side & Curtain
ANCAP SAFETY RATING	5 Star
BRAKING SAFETY SYSTEM	4 Wheel ABS, ASC & EBD
SMART BRAKE & BRAKE ASSIST	Yes
ACTIVE TRACTION CONTROL (ATC)	Yes
HILL START ASSIST	Yes
SECURITY SYSTEM	Immobiliser
FRONT SEAT BELTS WITH WARNING LAMP & BUZZER	3-Point with ELR x2, Pretensioner, Force Limiter & Adjustable Belt Anchor
REAR SEAT BELTS	3-point with ELR x3
CHILD SEAT RESTRAINTS	ISOFIX x2 on 2nd Row of Seats & Tether Anchor x3
CHILD PROOF LOCK ON REAR DOORS	Yes
REVERSING CAMERA WITH DISPLAY ON AUDIO SCREEN	Yes
FORWARD COLLISION MITIGATION	Yes
LANE DEPARTURE WARNING	Yes
SUSPENSION	
FRONT	McPherson Strut with Front Stabiliser Bar
REAR	Torsion Beam
STEERING	
ELECTRONIC POWER STEERING WITH TILT ADJUST	Urethane with Audio, Cruise Control, Handsfree Phone Functions & Silver Trim
BRAKES	
BRAKES	13 Inch Ventilated Front Brake / 7 Inch Drum Rear Brake
PARK BREAK	Urethane Lever in Centre Console
WHEELS	
WHEEL TYPE	15 Inch Machine-Finished Alloy with Space Saver Spare
TYRES (FRONT & REAR)	175 / 55R15

	MIRAGE XLS
EXTERIOR	
FRONT BUMPER & GRILLE	Dynamic Shield with Chrome Detail
REAR BUMPER	Body Colour
HEADLAMPS	Halogen
DAYTIME RUNNING LIGHTS	Halogen in Bumper
REAR SPOILER	Body Colour with LED Stop Lamp
TINTED PRIVACY GLASS	Rear Hatch & Back Doors
INTERIOR	
SEAT TRIM FABRIC	Premium Black Woven Cloth
DRIVER'S SEAT	Height, Slide & Tilt Adjustable
FRONT PASSENGER SEAT	Slide & Tilt Adjustable
REAR SEATS	60:40 Split Back Foldable Seat
DOOR HANDLES	Chrome
WINDOW SWITCH PANEL	Carbon Pattern with Soft Touch Arm Rest
FRONT DOOR TRIM	Black with Cloth Insert
CARGO AREA SHELF COVER	Yes
COMFORT & CONVENIENCE ITEMS	
HIGH CONTRAST METER	Yes
MULTI DISPLAY METER WITH TRIP COMPUTER	Outside Temperature, Eco Indicator, Fuel Consumption Meter & Trip Computer
CRUISE CONTROL	Yes
CENTRAL LOCKING	Keyless Entry - 2 Transmitter Keys
ELECTRIC WINDOWS	All Doors. Auto Up & Down (Drivers Only)
AUDIO & MEDIA	
SOUND SYSTEM WITH STEERING WHEEL CONTROLS	7 Inch Touch Screen Smartphone Link Display Audio (SDA) System (Apple CarPlay & Android Auto Compatible), DAB Radio AM/FM
DIMENSION / WEIGHTS	
OVERALL LENGTH / WIDTH / HEIGHT	3,845 / 1,665 / 1,510 mm
WHEEL BASE	2,450 mm
TRACK FRONT / REAR	1,430 / 1,415 mm
GROUND CLEARANCE	160 mm
HEAD ROOM FRONT / REAR	890 / 845 mm
TURNING CIRCLE	9.2 m
KERB WEIGHT	895 kg
GROSS VEHICLE WEIGHT	1,370 kg
CARGO ROOM LENGTH (SEAT DOWN)	1,240 mm
CARGO ROOM LENGTH (SEAT UP)	615 mm
CARGO ROOM WIDTH	1,170 mm
CARGO ROOM HEIGHT (WITH SPACE SAVER)	605 mm
CARGO VOLUME (2ND ROW UP)	235 L (VDA)
CARGO VOLUME (2ND ROW DOWN TO TOP OF SEAT)	599 L (VDA)
CARGO VOLUME (2ND ROW DOWN TO CEILING)	912 L (VDA)

While we have made every effort to ensure that the specifications are correct at the time of printing, Mitsubishi product is constantly developing. We reserve the right to change the specifications, colours and prices of models and items within this brochure. For current specifications always contact your Mitsubishi dealer.

Fuel economy figures are based on the ADR 81/02 test for combined urban/extra urban driving. Please note that actual on-road fuel consumption and emissions will vary depending on traffic conditions, vehicle load and the individuals' driving styles.



A VERY WELL MADE WARRANTY

There's no better protection for your new Mitsubishi than our **Diamond Advantage Warranty**. Whichever Mitsubishi* you see yourself in, wherever the road takes you, you'll be thoroughly covered from bumper to bumper.

Our **Diamond Advantage Warranty** comprises a **10 year/160,000 km powertrain warranty** that covers everything from engine to axle; a **5 year/130,000 km new vehicle warranty**; and **5 years Premium Roadside Assist**, which looks after you if the unexpected should happen. It's the warranty designed for complete peace of mind.

Visit **mmnz.co.nz** for terms and conditions