



MITSUBISHI  
MOTORS



PAJERO SPORT





***Live life well.***

LIFE IS BUSY. IT'S CRAZY. STOP IS NOT AN OPTION.  
AND YOU KNOW WHAT? IT'S WONDERFUL. WHAT A TIME TO BE ALIVE!  
YOU KNOW SOMETHING ELSE? YOU'RE ABOUT TO GET BUSIER.  
WELCOME TO THE INFINITELY CAPABLE *Pajero Sport*.  
*It's ready when you are.*



A Mitsubishi Pajero Sport 4WD is parked on a grassy cliff overlooking the ocean at sunset. The car is dark-colored, and the license plate area reads "PAJERO SPORT". A large, gnarled tree is on the left, and a swing hangs from one of its branches. The sun is low on the horizon, creating a warm glow.

PAJERO SPORT 4WD

***The Sports, road-tripping,  
family-protecting, danger-detecting,  
adventure-making, Utility Vehicle.***

» MODEL SHOWN Pajero Sport VRX in Deep Bronze.



## PAJERO SPORT 4WD



» MODEL SHOWN Pajero Sport VRX in Deep Bronze.

### » GO FAR

This vehicle inherits our very best traction system, coupled with an engine to match. Take your family and a decent sized boat anywhere you want. Now, the adventure doesn't end when the road does.

### » SERIOUS SAFETY

One of the safest vehicles we've ever produced, surpassing the highest international standards. From the way it reads the conditions to the way it handles, you and your passengers are safe on any surface.

### » GREAT TO LIVE WITH

**Pajero Sport** accommodates anyone, or anything with absolute ease. Morning school run, cruising through the city, winding your way through the back country; you and six passengers can do it all in total comfort.

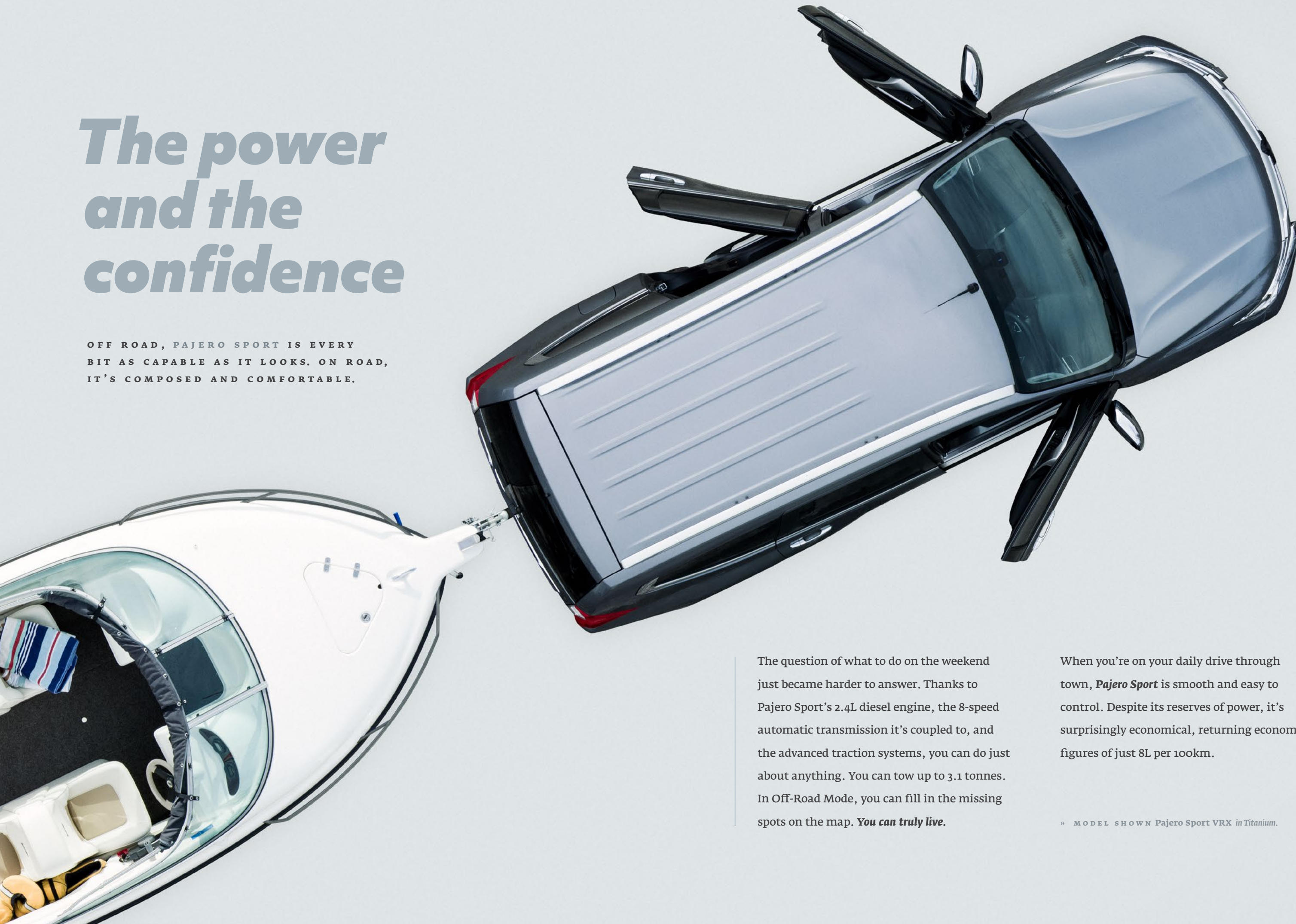
### » TOTALLY CONNECTED

The phone that's part of your life is now part of your SUV. **Pajero Sport** integrates your apps into an easy-to-use screen interface. The future of driving is here, now.



# The power and the confidence

OFF ROAD, PAJERO SPORT IS EVERY  
BIT AS CAPABLE AS IT LOOKS. ON ROAD,  
IT'S COMPOSED AND COMFORTABLE.



The question of what to do on the weekend just became harder to answer. Thanks to Pajero Sport's 2.4L diesel engine, the 8-speed automatic transmission it's coupled to, and the advanced traction systems, you can do just about anything. You can tow up to 3.1 tonnes. In Off-Road Mode, you can fill in the missing spots on the map. ***You can truly live.***

When you're on your daily drive through town, ***Pajero Sport*** is smooth and easy to control. Despite its reserves of power, it's surprisingly economical, returning economy figures of just 8L per 100km.

» MODEL SHOWN Pajero Sport VRX in Titanium.





# ***The most precious cargo: you***

EVERY ELEMENT OF PAJERO SPORT'S CONSTRUCTION AND TECHNOLOGY IS FOCUSED AROUND YOUR SAFETY.

With so many places to go, safety is paramount. **Pajero Sport** encloses you within a rigid shell and surrounds you with 9 airbags, including side curtain and driver's knee. The computer system constantly monitors the vehicle's relationship to the road and applies traction systems and brake force when required. Even your trailer is kept in line through unexpected conditions or turns. You won't notice these systems interacting to keep you safe. But you will appreciate the solid feeling of reassurance they give. Both models easily earn the 5 Star safety rating. The **VRX** goes a step further with radar-based active safety features.

» MODEL SHOWN Pajero Sport VRX in Titanium.



# Life's good in here

» MODEL SHOWN **Pajero Sport**  
VRX 7 seats.



PAJERO SPORT LETS YOU LIVE AN ACTIVE LIFE TO THE FULLEST. IT'S ALSO DESIGNED TO MAKE EASY WORK OF LIFE'S OTHER DEMANDS.

Both models of **Pajero Sport** offer three rows of seats, allowing you to carry seven people in total comfort and safety, just about anywhere. Any luggage you need for the trip is easily accommodated as well. The rear rows of seats fold down for anything larger.

No occupant is more catered to than the driver, who has complete control of the vehicle, audio system and hands-free phone from the leather steering wheel. On long or remote trips, the attention to passenger comfort will be very welcome.

» CUP HOLDERS  
Large cup holders put drink bottles or a serious morning grind within easy reach.





# Wired in

IN A WORLD WHERE EVERYTHING CONNECTS, WE BELIEVE  
YOUR VEHICLE SHOULD BE AT THE CENTRE OF IT ALL.



Whether you're on Android or iPhone, the **Smartphone Link Display Audio System** makes total connectivity effortless. Simply plug your phone in and use voice commands to activate music, send messages, make phone calls and access maps from your phone.

The audio system you'll be listening to has the finesse to capture the subtlety of any good music, and the beef to make your kids' songs sound like they've brought their bedroom with them.



» [LEFT] **POWER BRAKE**  
Cumbersome handbrakes are gone. One flick is all it takes to activate.

» [BELOW] **TRACTION MODE**  
Switch traction modes on the move with the class-leading Super Select II system.



# Everything's on board

WHICHEVER MODEL OF PAJERO SPORT YOU CHOOSE, YOU'LL TAKE A LONG LIST OF FEATURES WITH YOU.



» [ABOVE LEFT] **VISIBILITY**  
Stay visible, look sharp with daytime running LEDs.

» [MIDDLE LEFT] **STOP/START**  
The ease of no keys. One press starts and stops the engine.

» [LEFT] **PARKING SENSORS**  
Slot into any parking spot with ease. The Multi Around Monitor on VRX gives you a bird's eye view of the vehicle.

» [ABOVE] **SMARTBRAKE**  
SmartBrake detects when you accidentally hit the accelerator and brake together, and only applies the brake.

» **MODEL SHOWN**  
Pajero Sport VRX in Titanium.





» Pajero Sport XLS in Titanium.

## XLS

FEATURES BEFITTING A TOP-OF-THE-LINE MODEL ARE PLACED THROUGHOUT PAJERO SPORT XLS, FROM THE WAY IT DRIVES, TO THE STATE-OF-THE-ART CONNECTIVITY.

Everything the **Pajero Sport** name promises is amply delivered by the **XLS**. It carries the most advanced engine and traction system we've ever developed. It's equipped for any adventure, or unexpected situation and surpasses the **5 Star ANCAP Safety standard**.

The exterior styling is striking, distinctive. Inside, the experience is equally impressive with sharp interior design, punctuated with many smart features. The dash houses the large touch screen, which displays the rear-view camera and interface for the **Smartphone Link Display Audio System**.

Buttons for the cruise control with adjustable speed limiter, audio system and hands free **Bluetooth™** are smoothed into the lines of the leather steering wheel.



» Pajero Sport XLS fabric trim.

### PAJERO SPORT XLS AT A GLANCE

- + 2.4L Turbo Diesel Engine
- + 8-Speed Automatic Transmission
- + Super Select II 4WD
- + Off Road Mode
- + Smartphone Link Display Audio System
- + 5 Star ANCAP Safety
- + Hill Start Assist
- + Hill Descent Control
- + 3.1 Tonne Tow Rating with Trailer Stability Assist System
- + Reversing Camera with Rear Sensors
- + Fabric Seat Trim



» Pajero Sport VRX in Cardrona.

## VRX

STEP UP INTO LUXURY. PAJERO SPORT VRX TAKES YOU ANYWHERE AND BRINGS YOU EVERY CONCEIVABLE FEATURE.

The first impression of the **VRX** is a very smart one, thanks to the luxurious, welcoming leather seats for all passengers. Outside, deft cosmetic touches accent the sculpted lines, such as the distinctive tail lights.

When you're reversing, the touch screen gives you a 360° view of your surroundings; the safest way to negotiate driveways and tight spots. On the road, **VRX** detects vehicles in your blind spot. The headlights and wipers also activate the moment they're needed.

Your entertainment comes courtesy of the **8-speaker, 510-watt audio system**. Your driving pleasure is the primary purpose of the elegant **VRX**, wherever the road takes you.



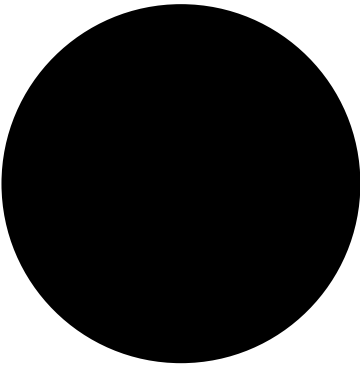
» Pajero Sport VRX leather trim.

### PAJERO SPORT VRX AT A GLANCE All the features of the XLS, plus:

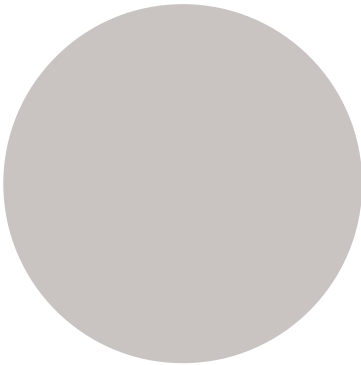
- + 360° Multi Around View Monitor
- + Blind Spot Warning System
- + Forward Collision Mitigation
- + Ultrasonic Miss-acceleration Mitigation System
- + Heated & Powered Front Seats
- + 8 Speakers
- + Leather Faced Interior
- + Black Machine Finish Wheels
- + LED Lights
- + Auto-light / Rain Sensors
- + Dual Zone Climate Control



Detailing



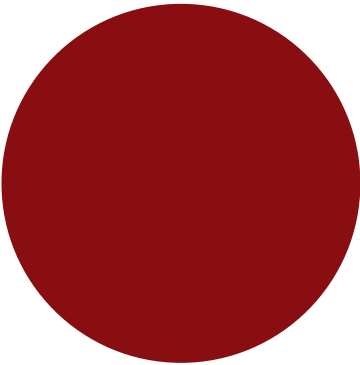
» LICORICE



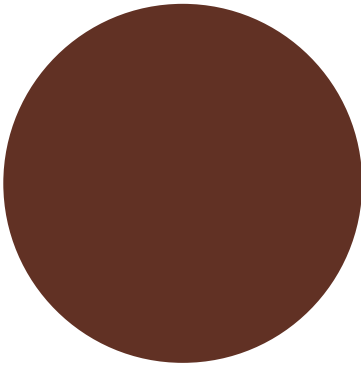
» STERLING SILVER



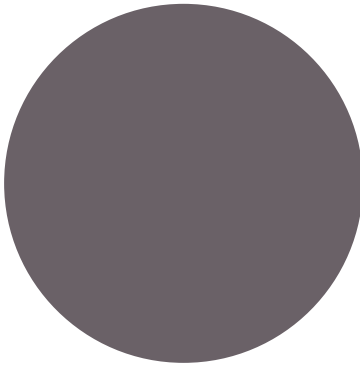
» CARDRONA



» REDWOOD



» DEEP BRONZE



» TITANIUM

Add extra features  
to personalise your  
Pajero Sport



» BODY GARNISH



» BONNET PROTECTOR



» ALLOY NUDGE BAR (XLS ONLY)



» LUGGAGE TRAY



» REAR SPOILER



» ROOF RACKS



» TOW BAR



» RUBBER & CARPET MATS

Specifications

ENGINE	XLS	VRX
TYPE	2.4L MIVEC Intercooled Turbo Diesel	
DISPLACEMENT	2442 CC	
MAX POWER	135 kW @ 3500 RPM	
MAX TORQUE	437 Nm @ 2500 RPM	
FUEL CONSUMPTION	8.0L / 100 KM	
CO2	208 g / KM	
FUEL TANK	68 L	

TRANSMISSION	XLS	VRX
TYPE	8 Speed Automatic Transmission with Sports Mode & Intelligent Shift Control	
4WD SYSTEM - DIAL UP	Super Select II 4WD with Centre Diff	
SPORTS MODE	Paddle shift & gear lever activated across both models	

SAFETY FEATURES	XLS	VRX
SAFETY RATING	5 Star ANCAP	
AIR BAGS	Driver, Passenger, Side, Driver's Knee & 1st, 2nd & 3rd row curtain	
BRAKING SAFETY SYSTEM	ABS, EBD, ASC & ATC	
4WD TRACTION CONTROL	Four modes: Gravel / Mud & Snow / Sand / Rock	
SMART BRAKE & BRAKE ASSIST	Both Models	
EMERGENCY STOP SIGNAL FUNCTION	Both Models	
TRAILER STABILITY ASSIST SYSTEM	Both Models	
HILL START ASSIST SYSTEM	Both Models	
HILL DESCENT CONTROL	Both Models	
CHILD SEAT RESTRAINTS	ISO-FIX x 2 on 2nd row of Seats & Tether Anchor x 3	
AUTO DOOR LOCK	At 15 KM/ hr with crash detection auto unlock across both models	

REVERSING CAMERA INTEGRATED WITH AUDIO UNIT	Both Models	
MISS-ACCELERATION PREVENTION SYSTEM	-	Yes
MULTI AROUND VIEW MONITOR SYSTEM WITH FOUR CAMERAS	-	Yes
FORWARD COLLISION MITIGATION	-	Yes
PARKING SENSORS WITH GUIDELINES ON CAMERA SCREEN	Rear	Front & Rear
BLIND SPOT WARNING SYSTEM	-	Yes
STEERING	XLS	VRX
4 SPOKE LEATHER STEERING WHEEL TILT & TELESCOPIC ADJUSTABLE	Both Models	

STEERING WHEEL CONTROLS	Audio, Cruise Control, Adjustable Speed Limiter, Hands Free Phone + Audio & Dash Display Control	Audio, Cruise Control, Adjustable Speed Limiter, Hands Free Phone + Audio, Multi Camera View & Dash Display Control
-------------------------	--	---

BRAKES	XLS	VRX
FRONT / REAR DISC BRAKES	Front 17" Ventilated / Rear 16"	
WHEELS	XLS	VRX
WHEELS - 18" X 7.5J ALLOYS WITH SPARE	Silver Finish	Black with Machine Finish
TYRES	265 / 60R18	

EXTERIOR	XLS	VRX
HEADLAMPS	Halogen	LED with Auto Levelling
DAY TIME RUNNING LIGHTS	Integrated with Fog Lamp	LED Strip Integrated with Headlamp
FRONT FOG LAMP	Both Models	
TAIL LIGHTS WITH BUILT IN REVERSE LAMP	Standard Style	LED Style
ROOF RAILS	Silver	
ELECTRIC DOOR MIRRORS	Chrome with Side Turn Lamps with Electric Control & Power Fold when Locking	
TINTED PRIVACY GLASS	Both Models	

INTERIOR	XLS	VRX
SEATING CAPACITY	7 Persons	
SEAT TRIM FABRIC	Dark Grey Fabric	Pleated Leather Faced*
DRIVER'S SEAT - PREMIUM WITH DUAL COMFORT FOAM	Slide, Recline & Height Adjustable	Heated with Power Slide, Recline & Height Adjustable
FRONT PASSENGER'S SEAT - PREMIUM WITH DUAL COMFORT FOAM	Slide & Recline Adjustable	Heated with Power Slide, Recline & Height Adjustable
2ND ROW SEATS	60 / 40 Split Fold & Tumble with Armrest	

3RD ROW SEATS	50 / 50 Split Fold	
COMFORT & CONVENIENCE ITEMS	XLS	VRX
ENTRY SYSTEM	Keyless Operating System (KOS) & Keyless Entry with Lock / Unlock Button on Front Doors & Tailgate	
START SYSTEM	Push Button Start / Stop	
WINDSCREEN WIPER, TWO SPEED WITH VARIABLE INTERMITTENT	Manual Control	Auto Rain & Speed Sensor
AUTO HEADLAMP CONTROL SYSTEM	-	Yes
AIR CONDITIONING WITH POLLEN FILTER	Climate Control	Dual Zone Climate Control

REAR AIR CONDITIONING FOR 2ND & 3RD ROW SEATS	Separate Fan Speed Controls with Roof Vents	
ECO MODE SCORE INDICATOR	Both Models	
INTERIOR MIRROR	Day / Night Type	Auto Dimming
AUDIO & MEDIA	XLS	VRX
SMARTPHONE LINK DISPLAY AUDIO (SDA)	7" Touch Screen SDA System (Apple CarPlay & Android Auto Compatible) AM / FM & DAB Radio	

AUDIO SYSTEM	6 Speaker	Premium 6 Channel 510w Amp with 8 Speakers
COMPOSITE ADAPTER - USB PORT X2 + HDMI & WIRELESS BLUETOOTH™ AUDIO STREAMING	Both Models	

CONNECTIVITY	Bluetooth™ Hands Free Telephone System with Steering Wheel Controls & Voice Activation	
DIMENSION / WEIGHTS	XLS	VRX
OVERALL LENGTH / WIDTH / HEIGHT (WITH ROOF RAILS)	4,785 / 1,815 / 1,805 mm	
WHEEL BASE	2,800 mm	
TRACK FRONT / REAR	1,520 / 1,515 mm	
GROUND CLEARANCE	218 mm	
APPROACH / DEPARTURE / RAMP BRAKE OVER ANGLE	30° / 24° / 23°	

TURNING CIRCLE	11.2 m	
WADING DEPTH	700 mm	
KERB WEIGHT	2,085 kg	2,100 kg
GROSS VEHICLE WEIGHT	2,710 kg	
GROSS COMBINATION WEIGHT	5,400 kg	
TOWING BRAKED / UNBRAKED	3,100 / 750 kg	
INTERIOR LENGTH / WIDTH / HEIGHT	2,585 / 1,420 / 920 mm	
CARGO ROOM LENGTH (2ND & 3RD ROW FOLDED)	1,575 mm	
CARGO ROOM WIDTH	1,280 mm (SAE)	
CARGO ROOM HEIGHT	932 mm (SAE)	
CARGO VOLUME – TO TOP OF SEAT WITH 3RD ROW UP	131 L (VDA)	
CARGO VOLUME – 2ND & 3RD ROW TUMBLED	1,488 L (VDA)	

\* THIRD ROW SEATS VINYL ON VRX

While we have made every intention to ensure specification is true at the time of printing, Mitsubishi product is constantly developing. We reserve the right to change the specification, colours and price of models and items within this brochure. For current specification always contact your Mitsubishi dealer.



# 10 | 5 YEAR YEAR

## DIAMOND ADVANTAGE

NEW ZEALAND'S BEST  
NEW CAR WARRANTY AND  
CUSTOMER CARE

### A VERY WELL MADE WARRANTY

---

There's no better protection for your new Mitsubishi than our ***Diamond Advantage Warranty***. In fact, there's no better new vehicle warranty available in New Zealand. Whichever Mitsubishi\* you see yourself in, wherever the road takes you, you'll be thoroughly covered from bumper to bumper.

Our ***Diamond Advantage Warranty*** comprises a **10 year/160,000 km powertrain warranty** that covers everything from engine to axle; a **5 year/130,000km new vehicle warranty**; and **5 years Premium Roadside Assist**, which looks after you if the unexpected should happen. It's the warranty designed for complete peace of mind.

---

Visit **[mmnz.co.nz](http://mmnz.co.nz)** for terms and conditions