



**MITSUBISHI  
MOTORS**

**OUTLANDER**



***A new morning.***

THEY WAKE YOU UP EARLY.

THEY STRETCH OUT BEDTIME LIKE A PRO.

THEY DEMAND YOUR ATTENTION. AND YOUR WALLET.

BUT ONE SMILE OR A HAND-MADE MOTHER'S DAY CARD

COVERED IN HEART STICKERS AND IT'S ALL FORGIVEN.

YOU'RE A PARENT, YOU GET IT.

***Outlander gets it too.***

OUTLANDER

*The SUV you'd design for your family.*



» MODEL SHOWN Outlander LS in Titanium.

# OUTLANDER



## » REASSURINGLY SAFE

Wherever you ferry the family, they'll be surrounded by a completely integrated system of active and passive safety measures. 5-Star safety standards are achieved by every model in the range.

## » EFFICIENT ON EVERY LEVEL

Efficiency is the guiding principle at the core of Outlander's design and engineering, in the way it saves fuel, reduces emissions and slips through the air.

## » EVERYONE'S LOOKED AFTER

Between school sports, weekend trips and endless rounds of grocery shopping, a family vehicle plays a big role in everyday life. That's why Outlander is completely accommodating and caters to the needs and comfort of every passenger.

## » EVERYTHING'S INCLUDED

Outlander carries the technology to make every aspect of driving enjoyable. The ride is firm and secure. The connectivity is effortless. The overall experience is a welcome pleasure.

# Family wants, family gets

**OUTLANDER** GIVES YOUR KIDS THE SPACE AND VERSATILITY THEY NEED, AND THE ADVENTURES THEY'LL REMEMBER. IT REWARDS YOU WITH SUBLIME COMFORT AND ELEGANT STYLE.

An active family asks a lot of their vehicle and **Outlander** delivers. Every model provides 3 rows of seats and if the outing involves a boat or trailer, you'll have the power you need with the option of 4WD. The likelihood of a long drive makes comfort essential as well. But the feeling of refinement is down to more than a well-sprung seat. You'll be surrounded by premium materials and sculpted surfaces, inside and out. Passengers are well and truly catered for; so are the many other things you'll need to carry. Both the back rows of seats fold flat for extra storage; 1.685 metres at full stretch. Access to the boot area is a breeze on VRX, thanks to the power-assisted tailgate.



And when the kids are in bed and the night is finally yours, you can glide into the city in style and enjoy the soft wash of quietness, thanks to **Outlander's** superior soundproofing.

» MODEL SHOWN **Outlander LS** in Cardrona.

# Safety for all

FROM ITS RIGID OUTER SHELL TO THE MANY AIRBAGS WITHIN, **OUTLANDER** IS ENGINEERED FOR ABSOLUTE SAFETY AND PEACE OF MIND.

The vehicle you entrust with your family's protection must take the matter very seriously. The sense of reassurance you get from **Outlander** is due to the way safety is woven throughout the vehicle's design.

You're enclosed inside a high-tensile lattice that directs energy away from passengers. But this isn't the first line of defence. **Outlander** employs multiple systems to avoid danger, with traction and stability constantly monitored and carefully controlled. Brakeforce is applied in the most effective way, whatever the vehicle's attitude or the surface conditions. The stiff body and the many airbags within it come to your aid when necessary. The **VRX** and **XLS** models include advanced safety systems, such as Adaptive Cruise Control and Forward Collision Mitigation, that react to the unexpected behaviour of other drivers. Every single model offers a 5-Star safety rating, and the sense of comfort it bestows.



» MODEL SHOWN **Outlander VRX**.

# Tread lightly

**OUTLANDER** IS A VEHICLE FOR THE WORLD WE LIVE IN,  
AND THE WORLD WE WANT TO CREATE.

In the pursuit of efficiency, we've looked at every aspect of **Outlander's** operation. We've seized the obvious opportunities, such as creating petrol and diesel engines that wring every last drop of energy from their fuel. Even the transmission assists by changing smoothly and maintaining efficiency through optimum gear ratios. The body is light and the outer panels are designed to reduce drag. To get the very best output from your fuel, the vehicle helps you to adjust your driving style with Eco Mode.

**Outlander** offers you the choice of a 2.4L petrol engine, or 2.3L turbo diesel which return economy figures between 6.2L and 7.2L per 100km. Emissions are also kept in check, as low as 161g of CO<sub>2</sub> per km.





# ***The state-of-the-art SUV***

A FAMILY VEHICLE MUST DELIVER IN EVERY DEPARTMENT,  
AND TECHNOLOGY IS NO EXCEPTION. OUTLANDER INCORPORATES  
THE VERY LATEST FEATURES AND CONNECTIVITY.

» MODEL SHOWN Outlander XLS.



» [LEFT] **TOTAL CONTROL**  
Fingertip control of handsfree phone and audio system.

» [BELOW] **INSTANT 4WD**  
On 4WD models, serious traction engages at the touch of a button.



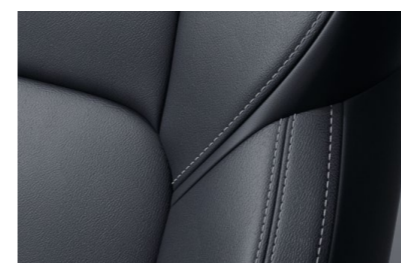
## Features for everyone

EACH MODEL OF **OUTLANDER** IS DESIGNED WITH YOU AND YOUR FAMILY IN MIND.

Every **Outlander** now features the Smartphone Link Display Audio system. Simply plug in your iPhone or Android to play music, send messages, make phone calls and use maps – all from your phone. The system is voice-activated and your apps are displayed on the large touchscreen in the centre of the dash. The driver has control of **Outlander's** audio system, Bluetooth™ and cruise control from the leather steering wheel. A good impression is created by the



string of daytime running LEDs beneath the front lamps. All models feature dual-zone climate control for a comfortable trip. You can marvel at the clarity of the high-power 6-speaker sound system. Its volume is equally impressive, much to your kids' delight.



» [ABOVE LEFT] **LUXURY OF LEATHER** »  
Ease on to the smooth Leather-Appointed seats of the VRX.

» [ABOVE] **VISIBILITY**  
Daytime running LEDs make a smart impression and improve visibility.

» [MIDDLE LEFT] **STOP/START**  
The ease of no keys. One press starts and stops the engine (selected models only).

» [LEFT] **EFFICIENCY**  
Control the engine, air conditioning and On-Demand 4WD system for maximum efficiency with Eco Mode.

» **MODEL SHOWN**  
**Outlander VRX** in Titanium.



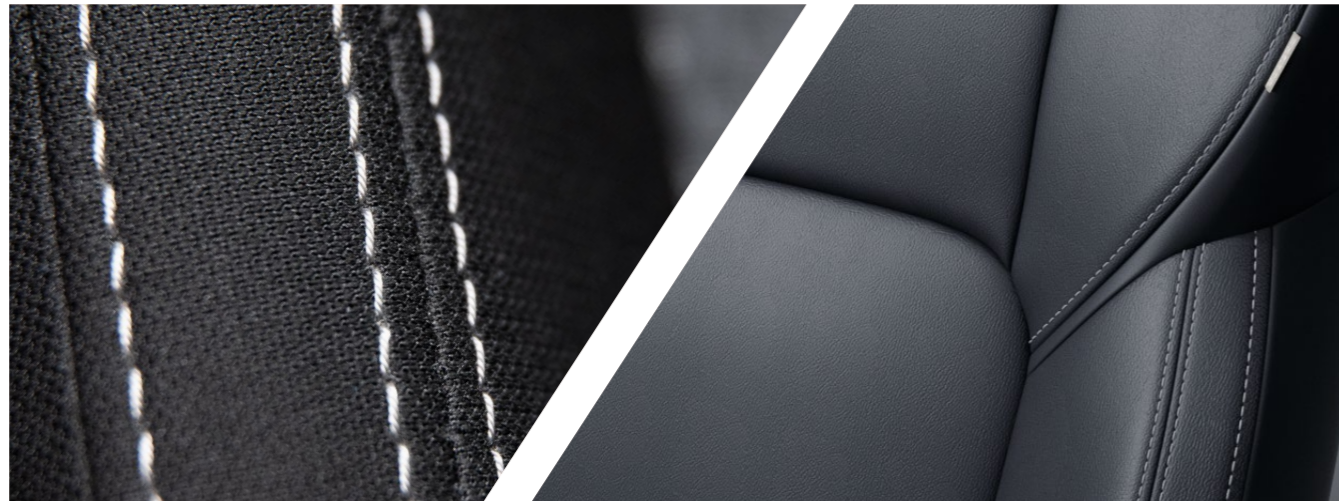
» Outlander LS in Amethyst Black.

# Outlander 2WD

GET THE POWER YOU NEED AND SAFETY FOR 7 WITH THE AFFORDABLE OUTLANDER 2WD LS.

## 2WD OUTLANDER 2.4L LS FEATURES:

- |  |   |
|--|---|
| + 2.4L Petrol Engine                       | + Daytime Running Lights                |
| + 7.2L / 100km Efficiency                  | + Keyless Entry                         |
| + CVT Auto                                 | + Smartphone Link Display Audio         |
| + 7 Seats                                  | + Touchscreen + Reversing Camera        |
| + 5-Star ANCAP Safety Rating               | + Electric Park Brake + Brake Auto-Hold |
| + 18" Alloy Wheels + Full-Size Alloy Spare | + Drivers Power Lumbar Support          |
| + Dual-Zone Air Conditioning               |   |



» Outlander LS & XLS cloth trim.

» Outlander VRX leather trim.



» Outlander XLS in Sterling Silver.

# Outlander 4WD

ALL THREE 4WD MODELS OFFER A RANGE OF FEATURES, PLUS ON-DEMAND 4WD FOR WHEREVER THE ADVENTURES LEAD YOU.

## 4WD OUTLANDER LS FEATURES:

- + 2.4L Petrol Engine
- + 7.2L / 100km Efficiency
- + CVT Auto
- + 7 Seats
- + 5-Star ANCAP Rating
- + 18" Alloy Wheels + Full-Size Alloy Spare
- + Dual-Zone Air Conditioning
- + Daytime Running Lights
- + Keyless Operation with Push-Button Start
- + Smartphone Link Display Audio
- + Touchscreen + Reversing Camera
- + Electric Park Brake + Brake Auto Hold
- + On-Demand 4WD

## 4WD XLS INCLUDES ALL LS FEATURES PLUS:

- + CVT Auto with 6-Speed, Sports Mode + Paddle-Shift
- + Adaptive Cruise Control
- + Forward Collision Mitigation with Pedestrian Detection
- + Lane Departure Warning
- + Blind Spot Warning with Lane Change Assist
- + Rear Cross Traffic Alert
- + Heated + Electric Fold-Away Door Mirrors
- + Rain-Sensing Wipers
- + Light-Sensing Headlamps + Auto High Beam
- + Auto-Dimming Interior Mirror

## 4WD VRX INCLUDES LS & XLS FEATURES PLUS:

- + 4-Camera Multi Around View Monitor
- + Opening Sunroof
- + Auto-Levelling LED Headlamps with Washers
- + LED Front Fog Lamps
- + Chrome Exterior Door Handles + Belt Line
- + Leather-Appointed Seats
- + Heated Front Seats with Driver's Power Adjustments
- + Ultrasonic Misacceleration System
- + Front Parking Sensors
- + Power Tailgate
- + Large Rear Spoiler



» **Outlander VRX** in Cardrona.

# Outlander 4WD Diesel

OUR POWERFUL, EFFICIENT DIESEL ENGINE MAKES AN EXCELLENT PARTNER FOR THE **4WD** SYSTEM ON **XLS** AND **VRX** MODELS.

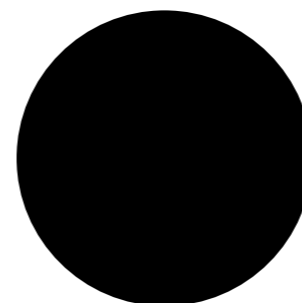
## 4WD XLS DIESEL FEATURES:

- + 2.3L Turbo Diesel
- + 6.2L / 100km Efficiency
- + 6-Speed Auto, Sports Mode + Paddle-Shift
- + On-Demand 4WD
- + Adaptive Cruise Control
- + Forward Collision Mitigation with Pedestrian Detection
- + Lane Departure Warning
- + Blind Spot Warning with Lane Change Assist
- + Rear Cross Traffic Alert
- + Heated + Electric Fold-Away Door Mirrors
- + Rain-Sensing Wipers
- + Light-Sensing Headlamps + Auto High Beam
- + 2.0 Tonne Braked Towing

## 4WD VRX DIESEL INCLUDES ALL XLS FEATURES PLUS:

- + 4-Camera Multi Around View Monitor
- + Opening Sunroof
- + Auto-Levelling LED Headlamps with Washers
- + LED Front Fog Lamps
- + Chrome Exterior Door Handles + Belt Line
- + Leather-Appointed Seats
- + Heated Front Seats with Driver's Power Adjustments
- + Ultrasonic Misacceleration System
- + Front Parking Sensors
- + Power Tailgate
- + Large Rear Spoiler

## Detailing



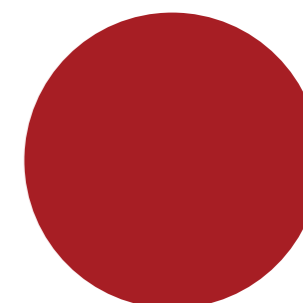
» AMETHYST BLACK



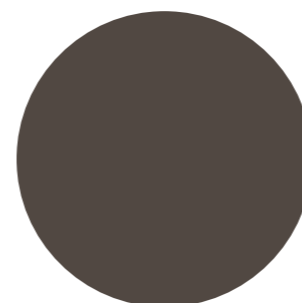
» STERLING SILVER



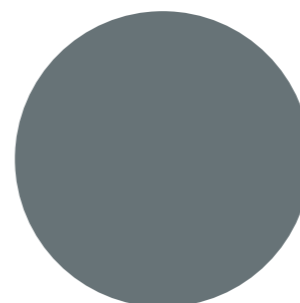
» CARDRONA



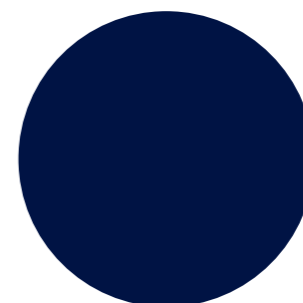
» RED DIAMOND



» IRON BARK



» TITANIUM



» ATLANTIC BLUE

Add extra features to personalise your Outlander



» WEATHER SHIELDS



» FOG LAMPS



» BONNET BADGE



» SIDE PROTECTION MOULDING



» REAR BUMPER SCUFF PLATE



» CARGO LINER



» TOW BAR



» FLOOR MATS

# Specifications

	PETROL				DIESEL	
	LS 2WD	LS 4WD	XLS 4WD	VRX 4WD	XLS 4WD	VRX 4WD
ENGINE						
ENGINE	2.4L				2.3L	
MAX POWER	126 kW @ 6,000 RPM				112 kW @ 3,500 RPM	
MAX TORQUE	224 Nm @ 4,200 RPM				366 Nm @ 1,500-2,750 RPM	
FUEL CONSUMPTION	7.2L / 100 KM				6.2L / 100 KM	
CO <sub>2</sub>	167 G / KM				161 G / KM	
FUEL TANK SIZE	63 L	60 L				
TRANSMISSION						
TYPE	CVT Auto		CVT Auto with 6-Speed, Sports Mode + Paddle-Shift		6-Speed Automatic with Sports Mode & Paddle-Shift	
ON-DEMAND 4WD SYSTEM	–	Push-Button Selection (Modes – 4WD Eco & 4WD Auto & 4WD Lock)				
SAFETY FEATURES						
AIRBAGS	Driver, Passenger, Side, Curtain & Driver's Knee Airbags					
BRAKING SAFETY SYSTEM	4-Wheel ABS with EBD and ASC, Smart Brake, Brake Assist					
ACTIVE TRACTION CONTROL & HILL START ASSIST	All Models					
REVERSING CAMERA WITH DASH DISPLAY & REVERSE PARKING SENSORS	All Models (VRX with Forward and Rear Parking Sensors)					
ADJUSTABLE SPEED LIMITER	All Models					
ADAPTIVE CRUISE CONTROL	–	Yes				
FORWARD COLLISION MITIGATION WITH PEDESTRIAN DETECTION	–	Yes				
LANE DEPARTURE WARNING	–	Yes				
BLIND SPOT WARNING (WITH LANE CHANGE ASSIST) & REAR CROSS TRAFFIC ALERT	–	Yes				
ULTRASONIC MISACCELERATION SYSTEM	–	Yes		–	Yes	
MULTI AROUND VIEW MONITOR WITH 4 CAMERAS	–	Yes		–	Yes	
ISOFIX CHILD RESTRAINT X2 & TETHER ANCHOR CHILD RESTRAINT X3 ON 2ND ROW	All Models					
STEERING						
TILT & TELESCOPIC ADJUSTABLE WITH STEERING LOCK	Rack & Pinion Electronic Power Steering					
STEERING WHEEL	Leather-Covered with Piano Black Detail. Integrated Cruise, Audio & Phone Controls					
WHEELS						
WHEEL TYPE	18" Machine-Finished Alloy Wheels					
TYRES (FRONT & REAR)	225 / 55R18					
SPARE WHEEL	Full Size Alloy			Space Saver	Full Size Alloy	Space Saver
BRAKES	16" Discs, Ventilated on Front					
EXTERIOR						
OPENING SUNROOF	–			Yes	–	Yes
HEADLAMPS WITH LED DRLS	Halogen with Manual-Levelling			LED with Auto-Levelling	Halogen with Manual-Levelling	LED with Auto-Levelling

	PETROL				DIESEL	
	LS 2WD	LS 4WD	XLS 4WD	VRX 4WD	XLS 4WD	VRX 4WD
ELECTRIC DOOR MIRRORS – BODY COLOUR	Yes		Heated with Fold-Away			
TINTED PRIVACY GLASS	All Models					
INTERIOR						
SEAT TRIM FABRIC	High-Grade Cloth			Leather-Appointed	High-Grade Cloth	Leather-Appointed
DRIVER’S SEAT	Slide, Recline & Height Adjuster, with Power Lumbar Support			Heated with Power Assisted Height, Recline, Slide & Lumbar Support	Slide, Recline & Height Adjuster, with Power Lumbar Support	Heated with Power Assisted Height, Recline, Slide & Lumbar Support
FRONT PASSENGER’S SEAT	Slide & Recline Adjuster			Heated with Manual Slide & Recline Adjuster	Slide & Recline Adjuster	Heated with Manual Slide & Recline Adjuster
2ND ROW SEATS	Split Fold-Flat Type with Armrest. Slide Adjustment & Walk-In System for 3rd Row					
3RD ROW SEATS	50 / 50 Split with Easy Fold System					
COMFORT & CONVENIENCE ITEMS						
CENTRAL LOCKING	Keyless Entry	Keyless Operation with Keyless Entry & Push-Button Start				
POWER TAILGATE	VRX only – Power Tailgate with Activate Button Located on (KOS) Transmitter Key, Tailgate & Interior Cabin					
WINDSCREEN WIPER, 2-SPEED WITH VARIABLE INTERMITTENT	Manual		Automatic Rain-Sensing			
AIR CONDITIONING	Dual-Zone Climate Control					
AUDIO & MEDIA						
SMARTPHONE LINK DISPLAY AUDIO (SDA) & SPEAKERS	8" Touchscreen SDA System (Apple CarPlay & Android Auto Compatible) AM / FM & DAB Radio & 6-Speaker (Including 2 Tweeters)					
CONNECTIVITY	USB Port x3 & Wireless Bluetooth Audio Streaming (2x Charging only)					
DIMENSIONS / WEIGHTS						
OVERALL LENGTH / WIDTH / HEIGHT (WITH ROOF RAILS)	4,695 / 1,810 / 1,710 mm					
WHEEL BASE	2,670 mm					
TRACK FRONT / REAR	1,540 / 1,540 mm					
GROUND CLEARANCE	190 mm					
APPROACH / DEPARTURE / RAMP BRAKE OVER ANGLE	21° / 21° / 21°					
KERB WEIGHT	1,475 kg	1,535 kg			1,630 kg	
GROSS VEHICLE WEIGHT / GROSS COMBINATION WEIGHT	2,170 / 3,770 kg	2,205 / 3,805 kg			2,290 / 4,290 kg	
TOWING BRAKED / UNBRAKED	1,600 / 750 kg				2,000 / 750 kg	
CARGO ROOM WIDTH / CARGO ROOM HEIGHT	1,263 / 794 mm					
CARGO ROOM WIDTH (BETWEEN WHEEL ARCHES)	974 mm					
CARGO VOLUME TO ROOF (2ND & 3RD ROW SEATS DOWN)	1,608 L (VDA)					
CARGO ROOM LENGTH (2ND ROW SEATS UP, 3RD ROW SEATS DOWN)	1,048 mm (SAE)					
MAX CARGO ROOM LENGTH (2ND & 3RD ROW SEATS DOWN)	1,845 mm (SAE)					
FLAT FLOOR LENGTH (2ND & 3RD ROW SEATS DOWN)	1,685 mm (SAE)					

While we have made every effort to ensure that the specifications are correct at the time of printing, Mitsubishi product is constantly developing. We reserve the right to change the specifications, colours and prices of models and items within this brochure. For current specifications always contact your Mitsubishi dealer.

Fuel economy figures are based on the ADR 81/02 test for combined urban/extra urban driving. Please note that actual on-road fuel consumption and emissions will vary depending on traffic conditions, vehicle load and the individuals' driving styles.



## A VERY WELL MADE WARRANTY

---

There's no better protection for your new Mitsubishi than our **Diamond Advantage Warranty**. Whichever Mitsubishi\* you see yourself in, wherever the road takes you, you'll be thoroughly covered from bumper to bumper.

Our **Diamond Advantage Warranty** comprises a **10 year/160,000 km powertrain warranty** that covers everything from engine to axle; a **5 year/130,000 km new vehicle warranty**; and **5 years Premium Roadside Assist**, which looks after you if the unexpected should happen. It's the warranty designed for complete peace of mind.

---

Visit **[mmnz.co.nz](http://mmnz.co.nz)** for terms and conditions