



**MITSUBISHI
MOTORS**



PAJERO SPORT

Live life well.

LIFE IS BUSY. IT'S CRAZY. STOPPING IS NOT AN OPTION.
AND YOU KNOW WHAT? IT'S WONDERFUL. WHAT A TIME TO BE ALIVE!
YOU KNOW SOMETHING ELSE? YOU'RE ABOUT TO GET BUSIER.
WELCOME TO THE INFINITELY CAPABLE *Pajero Sport*.
It's ready when you are.



» MODEL SHOWN Pajero Sport VRX in Graphite Grey.

PAJERO SPORT

*The Sports, road-tripping,
family-protecting, danger-detecting,
adventure-making, Utility Vehicle.*



» MODEL SHOWN Pajero Sport VRX in Graphite Grey.

PAJERO SPORT



» MODEL SHOWN Pajero Sport VRX in Graphite Grey.

» GO FAR

This vehicle inherits our very best traction system, with an engine to match. Take your family and a decent-sized boat anywhere you want. Now, the adventure doesn't end when the road does.

» SERIOUS SAFETY

Pajero Sport is one of the safest vehicles we've ever produced, surpassing the highest international standards. From the way it reads the conditions to the way it handles, you and your passengers are safe on any surface.

» GREAT TO LIVE WITH

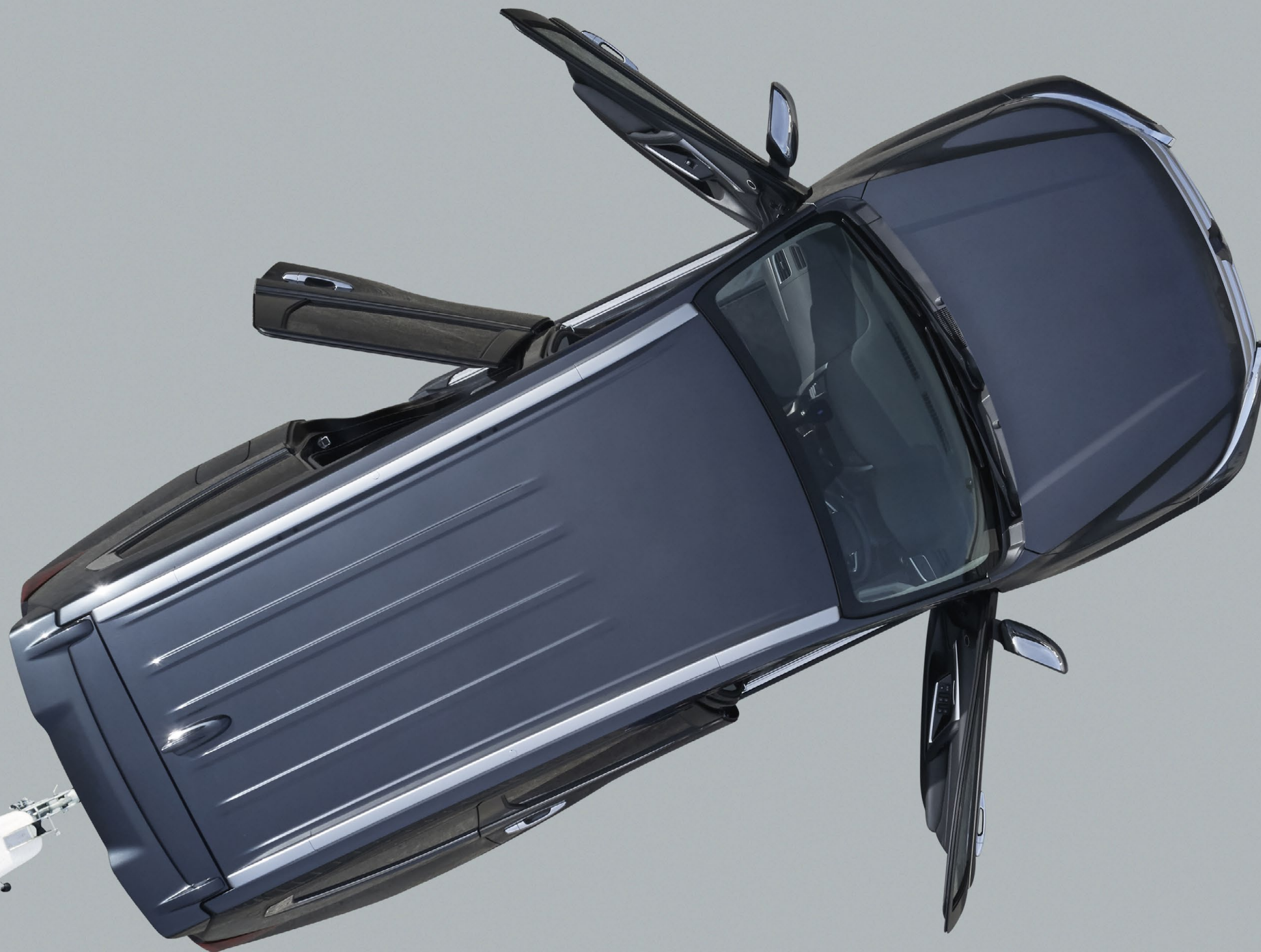
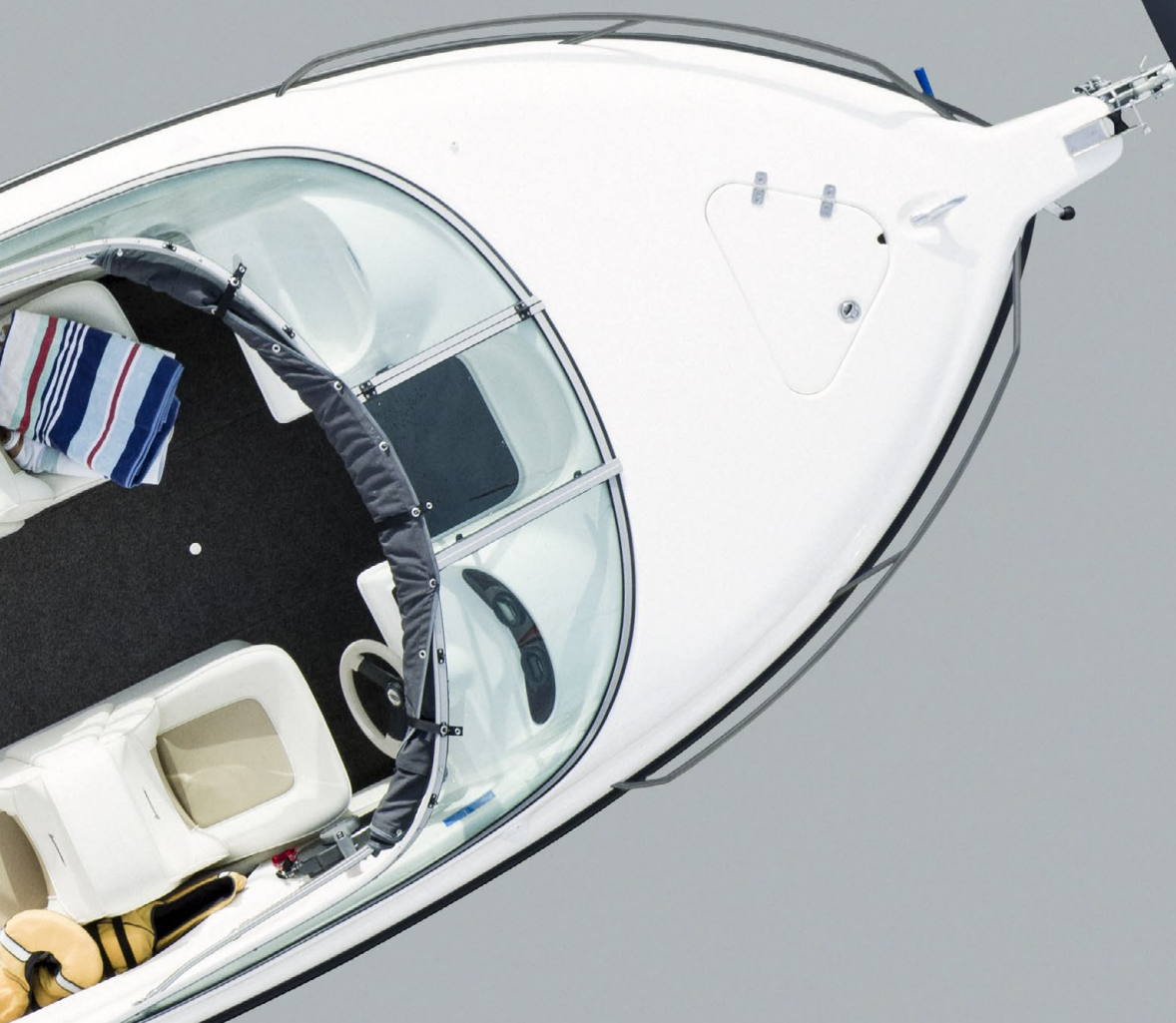
Pajero Sport accommodates 7 people with ease, while the Power Tailgate makes loading up simple. Wherever you go you'll be in total comfort, from the school run, to cruising the city, or winding your way through the back country.

» TOTALLY CONNECTED

The phone that's part of your life is now part of your SUV. **Pajero Sport** integrates your apps into an easy-to-use touchscreen interface. The future of driving is here, now.

The power and the confidence

OFF ROAD, PAJERO SPORT IS EVERY
BIT AS CAPABLE AS IT LOOKS. ON ROAD,
IT'S COMPOSED AND COMFORTABLE.



The question of what to do on the weekend just became harder to answer. Thanks to **Pajero Sport's** 2.4L Diesel Engine, the 8-Speed Automatic Transmission it's coupled to and the advanced traction systems, you can do just about anything. You can tow up to 3.1 tonnes. In Off Road Mode you can fill in the missing spots on the map. ***You can truly live.***

When you're on your daily drive through town, **Pajero Sport** is smooth and easy to control. Despite its reserves of power, it's surprisingly efficient, returning an economy figure of just 9.2L per 100km*.

» MODEL SHOWN Pajero Sport VRX in Graphite Grey.

*Fuel economy and range figures are based on the ADR 81/02 test for combined urban/extra urban driving, calculated to WLTP-31. Please note that actual on-road fuel consumption will vary depending on traffic conditions, vehicle load and the individuals' driving styles.

The most precious cargo: you

EVERY ELEMENT OF PAJERO SPORT'S CONSTRUCTION AND TECHNOLOGY IS FOCUSED ON YOUR SAFETY.

With so many places to go, safety is paramount. **Pajero Sport** encloses you within a rigid shell and surrounds you with 9 airbags, including Side, Curtain and Driver's Knee. The computer system constantly monitors the vehicle's relationship to the road and applies traction systems and brake force when required. Even your trailer is kept in line through unexpected conditions and turns. You won't notice these systems interacting to keep you safe. But you will appreciate the solid feeling of reassurance they give. **Pajero Sport** easily earns its 5-Star safety rating. Advanced safety features like Forward Collision Mitigation, Blind Spot Warning and Rear Cross Traffic Alert are all standard.



» MODEL SHOWN Pajero Sport VRX in Graphite Grey.



**Life's good
in here**



PAJERO SPORT LETS YOU LIVE AN ACTIVE LIFE TO THE FULLEST. IT'S ALSO DESIGNED TO MAKE EASY WORK OF LIFE'S OTHER DEMANDS.

Pajero Sport offers 3 rows of seats, letting you carry 7 people in total comfort and safety, just about anywhere. Any luggage you need is easily accommodated as well. The rear seats fold down for anything larger, and access is a breeze with the Power Tailgate.

No occupant is more catered to than the driver, who has fingertip control of the Audio System, handsfree phone and Adaptive Cruise Control from the Leather Steering Wheel. Both front seats are Leather-Appointed and heated, plus the driver's seat provides Lumbar Support. On long trips the attention to passenger comfort will be very welcome.



» **CUP HOLDERS**
Large cup holders put drink bottles within easy reach.

Wired in

IN A WORLD WHERE EVERYTHING CONNECTS, WE BELIEVE
YOUR VEHICLE SHOULD BE AT THE CENTRE OF IT ALL.



Whether you're on Android or iPhone, the Smartphone Link Display Audio System makes total connectivity effortless. Simply plug your phone in and use voice commands to activate music, send messages, make phone calls and access maps from your phone. Download the Mitsubishi Remote Control App and connect to your **Pajero Sport** from your smartphone to access vehicle information, car finder and operation assistant.

You can also control many of the vehicle's functions, including Power Tailgate with the Mitsubishi Remote Control App. The Audio System has all the volume and clarity you, or your kids, could want.



» [LEFT] **ELECTRIC PARK BRAKE**
Cumbersome handbrakes are gone.
One flick is all it takes to activate.

» [BELOW] **SUPER SELECT 4WD**
Switch between 2WD and 4WD on the move with the class-leading Super Select 4WD system.



Everything's on board

WHEN YOU GO ADVENTURING IN PAJERO SPORT,
YOU'LL TAKE A LONG LIST OF FEATURES WITH YOU.



» [ABOVE LEFT] **VISIBILITY**
Stay visible, look sharp with Daytime Running LEDs.

» [MIDDLE LEFT] **STOP/START**
The ease of no keys. One press starts and stops the engine.

» [LEFT] **PARKING SENSORS**
Slot into any parking spot with ease. The Multi Around View Monitor gives you a bird's eye view of the vehicle.

» [ABOVE] **SMARTBRAKE**
If you accidentally hit both pedals, Smartbrake cancels out the accelerator so you'll stop when you really need to.





» Pajero Sport VRX in White Diamond.

Features at a glance

PAJERO SPORT VRX TAKES YOU ANYWHERE AND BRINGS YOU EVERY CONCEIVABLE FEATURE AND COMFORT.

Power, exceptional 4WD, safety and luxury are all aboard **Pajero Sport VRX**. The 2.4L Turbo Diesel Engine is coupled to an 8-Speed Automatic Transmission for instant torque, excellent efficiency and a **3.1 Tonne Braked Towing capacity**.

The **Super Select 4WD system** with Off Road Mode opens up the country like never before. To ensure your safety in all conditions, there's Adaptive Cruise Control, Forward Collision Mitigation and many more advanced safety systems.

Driver and passenger are treated to the heated, Leather-Appointed seats, while all 7 occupants enjoy Dual-Zone Climate Control and the impressive **8-Speaker Audio System**.

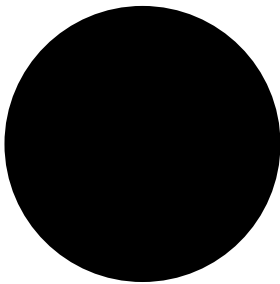


» Pajero Sport VRX Leather-Appointed trim.

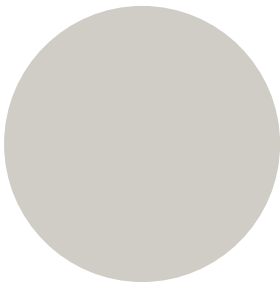
PAJERO SPORT VRX AT A GLANCE

- + 2.4L Turbo Diesel Engine
- + 8-Speed Automatic Transmission
- + Adaptive Cruise Control
- + Forward Collision Mitigation
- + Rear Cross Traffic Alert
- + 360° Multi Around View Monitor
- + Leather-Appointed Interior
- + Heated and Powered Front Seats
- + Blind Spot Warning
- + Power Tailgate
- + Super Select 4WD
- + 3.1 Tonne Braked Towing

Detailing



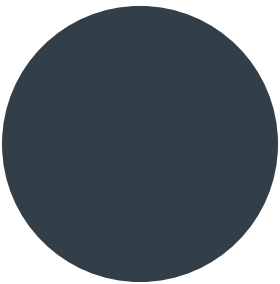
» PITCH BLACK



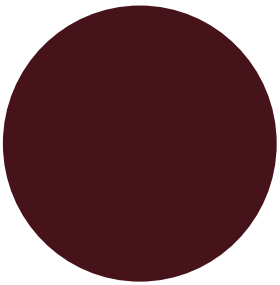
» STERLING SILVER



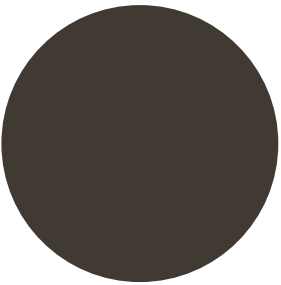
» WHITE DIAMOND



» GRAPHITE GREY



» REDWOOD



» DEEP BRONZE

Add extra features to personalise your Pajero Sport



» WEATHER SHIELDS



» ROOF RACKS



» REAR AIR DAM



» FRONT AIR DAM



» CARGO LINER



» SIDE STEP GARNISH



» SCUFF PLATE



» CARPET MATS



» FENDER FLARES

OVERSEAS MODEL SHOWN

Specifications

VRX	
ENGINE	
TYPE	2.4L MIVEC Intercooled Turbo Diesel
DISPLACEMENT	2,442 cc
MAX POWER	135 kW @ 3,500 RPM
MAX TORQUE	437 Nm @ 2,500 RPM
FUEL CONSUMPTION*	9.2 L / 100 KM
CO ₂ **	243 g / KM
FUEL TANK	68 L

TRANSMISSION	
TYPE	8-Speed Automatic Transmission with Sports Mode & Intelligent Shift Control
4WD SYSTEM – DIAL UP	Super Select II 4WD with Centre Diff

SAFETY	
SAFETY RATING	5-Star ANCAP
AIRBAGS	Driver, Passenger, Side, Curtain 1st, 2nd & 3rd Row & Drivers Knee
BRAKING SAFETY SYSTEM	ABS, EBD, ASC & ATC
OFF ROAD MODE	Four Modes: Gravel / Mud & Snow / Sand / Rock
SMARTBRAKE & BRAKE ASSIST	Yes
EMERGENCY STOP SIGNAL FUNCTION	Yes
ADJUSTABLE SPEED LIMITER	Yes
TRAILER STABILITY ASSIST SYSTEM	Yes
HILL START ASSIST SYSTEM	Yes
HILL DESCENT CONTROL	Yes
IMMOBILISER	Yes
CHILD SEAT RESTRAINTS	ISOFIX x2 on 2nd Row of Seats & Tether Anchor x3
CHILD-PROOF LOCK ON REAR DOOR	Yes
FRONT SEATBELTS	3-Point with ELR x 2, Pretensioners & Adjustable Belt Anchor
2ND ROW SEATBELTS	3-Point with ELR x 3
3RD ROW SEATBELTS	3-Point with ELR x 2
FORWARD COLLISION MITIGATION	Yes
ADAPTIVE CRUISE CONTROL	Yes
REVERSING CAMERA INTEGRATED WITH AUDIO UNIT	Yes
MULTI AROUND VIEW MONITOR SYSTEM WITH FOUR CAMERAS LINKED TO ULTRASONIC SENSORS	Yes
PARKING SENSORS WITH GUIDELINES ON CAMERA SCREEN	Front & Rear
BLIND SPOT WARNING (WITH LANE CHANGE ASSIST)	Yes
REAR CROSS TRAFFIC ALERT	Yes
ULTRASONIC MISACCELERATION MITIGATION SYSTEM	Yes

SUSPENSION	
FRONT	Independent Wishbone with Coil Spring & Stabiliser Bar
REAR	3 Link Torque Arm with Coil Spring & Stabiliser Bar

STEERING	
POWER STEERING (RACK & PINION)	Yes
4-SPOKE LEATHER STEERING WHEEL TILT & TELESCOPIC ADJUSTABLE	Yes
STEERING WHEEL CONTROLS	Audio, Cruise Control, Adjustable Speed Limiter, Handsfree Phone & Audio, Multi Camera View & Dash Display Control

BRAKES	
FRONT / REAR DISC BRAKES	Front 17" Ventilated / Rear 16"

WHEELS	
WHEEL TYPE	18" x 7.5J Alloys with Full Size 18" Alloy Spare
TYRES	265 / 60R18

While we have made every effort to ensure that the specifications are correct at the time of printing, Mitsubishi product is constantly developing. We reserve the right to change the specifications, colours and prices of models and items within this brochure. For current specifications always contact your Mitsubishi dealer.

*Fuel economy and range figures are based on the ADR 81/02 test for combined urban/extra urban driving, calculated to WLT-3P. Please note that actual on-road fuel consumption will vary depending on traffic conditions, vehicle load and the individuals' driving styles.

**CO₂ figure is calculated to WLT-3P.

VRX	
EXTERIOR	
HEADLAMPS	LED with Auto-Levelling and Integrated LED Daytime Running Lights
LED CORNERING LAMP	Integrated in Bumper
LED FRONT FOG LAMP	Integrated in Bumper
ELECTRIC DOOR MIRRORS	Chrome with Side Turn Lamps with Electric Control & Power Fold when Locking
TINTED PRIVACY GLASS	Yes
REAR SPOILER	Yes
ROOF RAILS	Yes

INTERIOR	
SEATING CAPACITY	7 Persons
SEAT TRIM FABRIC	Leather-Appointed
DRIVER'S SEAT	Heated with Power Slide, Recline & Height Adjustable with Power Lumbar Support
FRONT PASSENGER'S SEAT	Heated with Power Slide, Recline & Height Adjustable
2ND ROW SEATS	60 / 40 Split Fold & Tumble with Armrest
3RD ROW SEATS	Folding type with 50 / 50 Split

COMFORT & CONVENIENCE ITEMS	
MITSUBISHI REMOTE CONTROL SMART PHONE APPLICATION	Yes
ENTRY SYSTEM	Keyless Operating System (KOS) & Keyless Entry with Lock / Unlock Button on Front Doors & Tailgate – 2 Transmitter Key
START SYSTEM	Push-Button Start / Stop
FULL DISPLAY 8" COMBINATION METER	Yes
WINDSCREEN WIPER, 2-SPEED WITH VARIABLE INTERMITTENT	Rain-Sensing
AIR CONDITIONING WITH POLLEN FILTER	Dual Zone Climate Control
REAR AIR CONDITIONING FOR 2ND & 3RD ROW SEATS	Separate Fan Speed Controls with Roof Vents
ACCESSORY SOCKETS x 2	Lower Instrument Panel & Cargo Area
220V AC POWER OUTLET	Rear of Center Console
USB PORTS	2x on Instrument Panel, 2x at Rear of Console Box (Charging Only)
POWER TAILGATE	Yes -Power Tailgate with Activate Button Located on KOS Transmitter Key, Tailgate, Interior Cabin and App Compatible

AUDIO & MEDIA	
SMARTPHONE LINK DISPLAY AUDIO (SDA) SYSTEM	8" Touchscreen SDA System (Apple CarPlay & Android Auto Compatible) AM / FM & DAB Radio
PREMIUM SUPER AUDIO SYSTEM	6 Channel 510W Amp with 8 Speakers and Titanium Tweeters
BLUETOOTH™ HANDSFREE TELEPHONE SYSTEM WITH STEERING WHEEL CONTROLS AND VOICE ACTIVATION	Yes
CONNECTIVITY	USB Ports x4 (rear USB Ports charging only) & HDMI and Wireless Bluetooth™ Audio Streaming
ANTENNA	Roof-Mounted Fin Antenna

DIMENSIONS / WEIGHTS	
OVERALL LENGTH / WIDTH / HEIGHT (WITH ROOF RAILS)	4,825 / 1,815 / 1,835 mm
WHEEL BASE	2,800 mm
TRACK FRONT / REAR	1,520 / 1,515 mm
GROUND CLEARANCE	218 mm
APPROACH / DEPARTURE / RAMP BRAKE OVER ANGLE	30° / 24° / 23°
TURNING CIRCLE	11.2 m
KERB WEIGHT	2,080 kg
GROSS VEHICLE WEIGHT	2,775 kg
GROSS COMBINATION WEIGHT	5,565 kg
TOWING BRAKED / UNBRAKED	3,100 / 750 kg
INTERIOR LENGTH / WIDTH / HEIGHT	2,585 / 1,420 / 920 mm
CARGO ROOM LENGTH (2ND & 3RD ROWS FOLDED)	1,575 mm
CARGO ROOM WIDTH	1,280 mm (SAE)
CARGO ROOM HEIGHT	932 mm (SAE)
CARGO VOLUME – TO TOP OF SEAT WITH 3RD ROW UP	131 L (VDA)
CARGO VOLUME – 2ND & 3RD ROW TUMBLED	1,488 L (VDA)



A VERY WELL MADE WARRANTY

There's no better protection for your new Mitsubishi than our **Diamond Advantage Warranty**. Whichever Mitsubishi* you see yourself in, wherever the road takes you, you'll be thoroughly covered from bumper to bumper.

Our **Diamond Advantage Warranty** comprises a **10 year / 160,000 km powertrain warranty** that covers everything from engine to axle; a **5 year / 130,000 km new vehicle warranty**; and **5 years' Premium Roadside Assist**, which looks after you if the unexpected should happen. It's the warranty designed for complete peace of mind.

Visit **mmnz.co.nz** for terms and conditions